

A Simple Model for Intrinsic Image Decomposition with Depth Cues

Supplementary Material

Qifeng Chen¹ Vladlen Koltun^{1,2}

¹Stanford University

²Adobe Research

List of Sintel scenes. The 15 scenes from the MPI-Sintel dataset that were used for evaluation are “alley 1”, “alley 2”, “bamboo 1”, “bamboo 2”, “bandage 1”, “bandage 2”, “market 2”, “market 5”, “market 6”, “mountain 1”, “shaman 2”, “sleeping 1”, “sleeping 2”, “temple 2”, and “temple 3”.

Additional images. Pages 2-6 of this document provide results on fifteen images from the NYU dataset that were used by Barron and Malik. The results for each image are organized as in Figure 1 in the paper. Pages 7-8 provide results on additional images from the MPI-Sintel dataset.

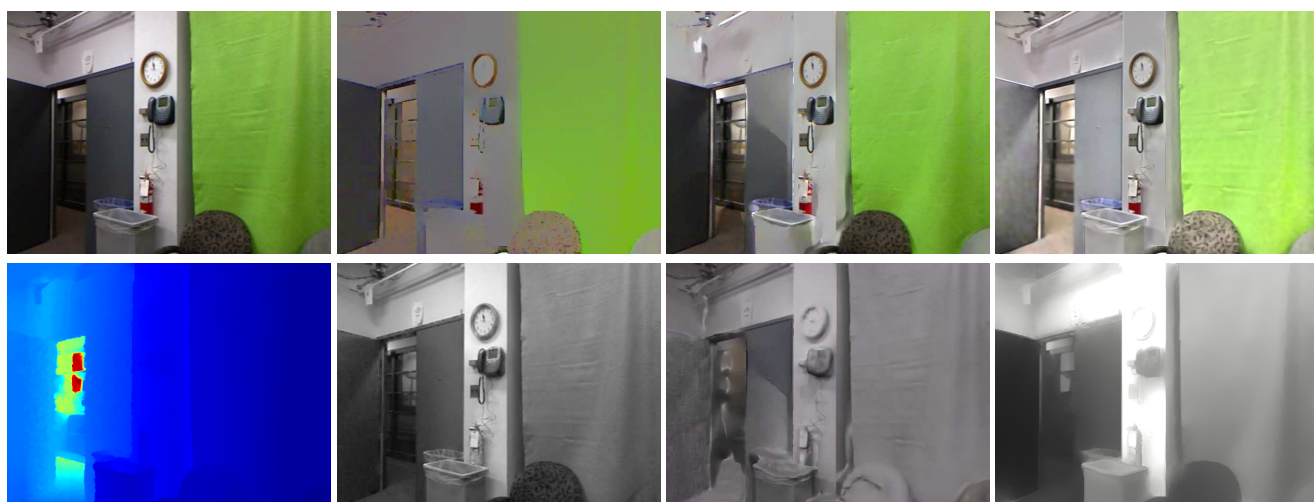


(a) Input

(b) Lee et al.

(c) Barron et al.

(d) Our approach

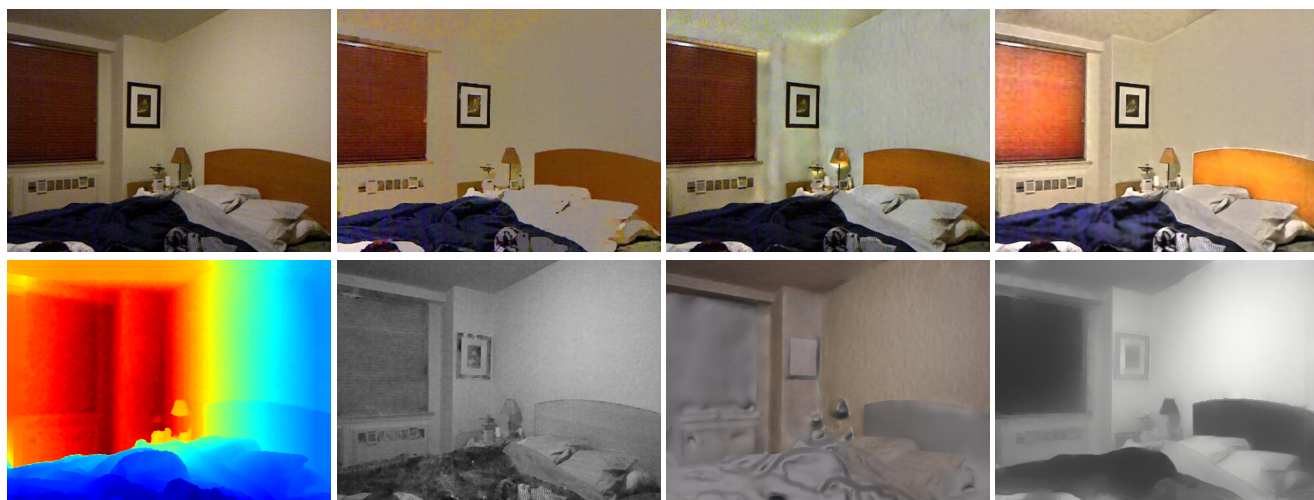


(a) Input

(b) Lee et al.

(c) Barron et al.

(d) Our approach

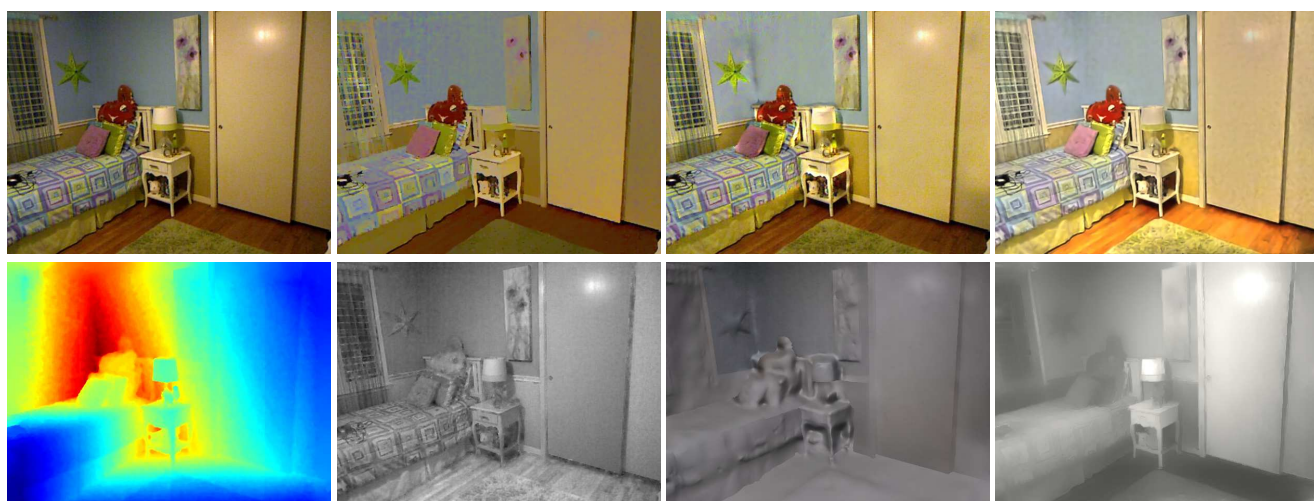
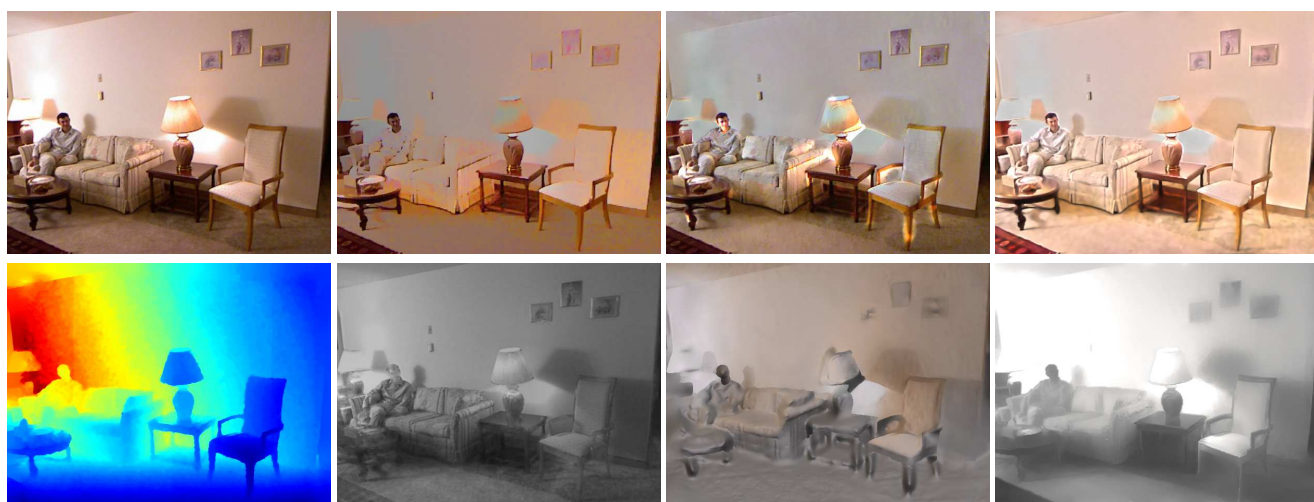
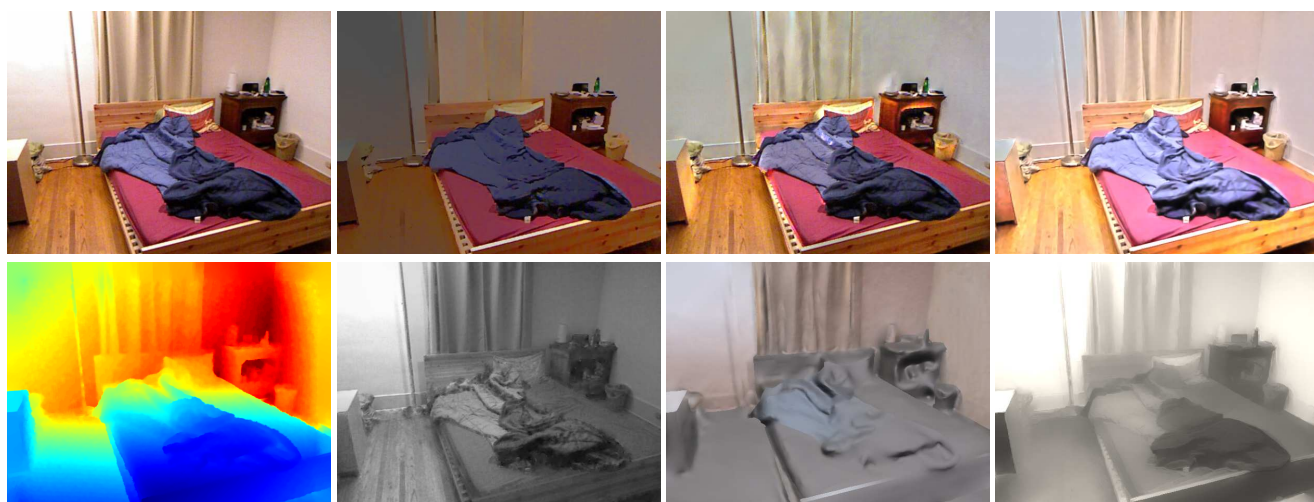


(a) Input

(b) Lee et al.

(c) Barron et al.

(d) Our approach

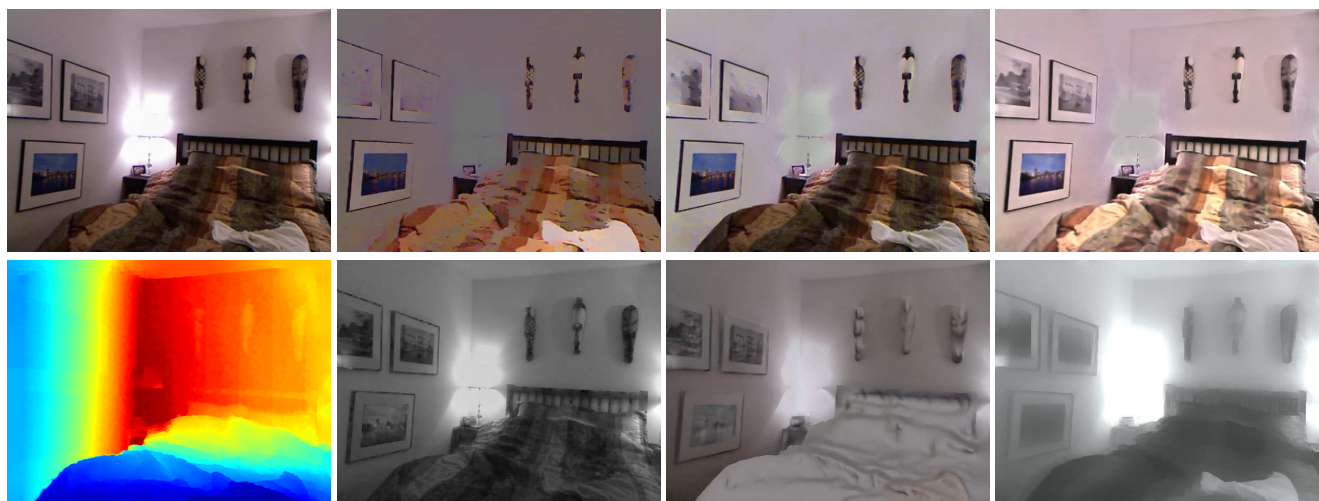
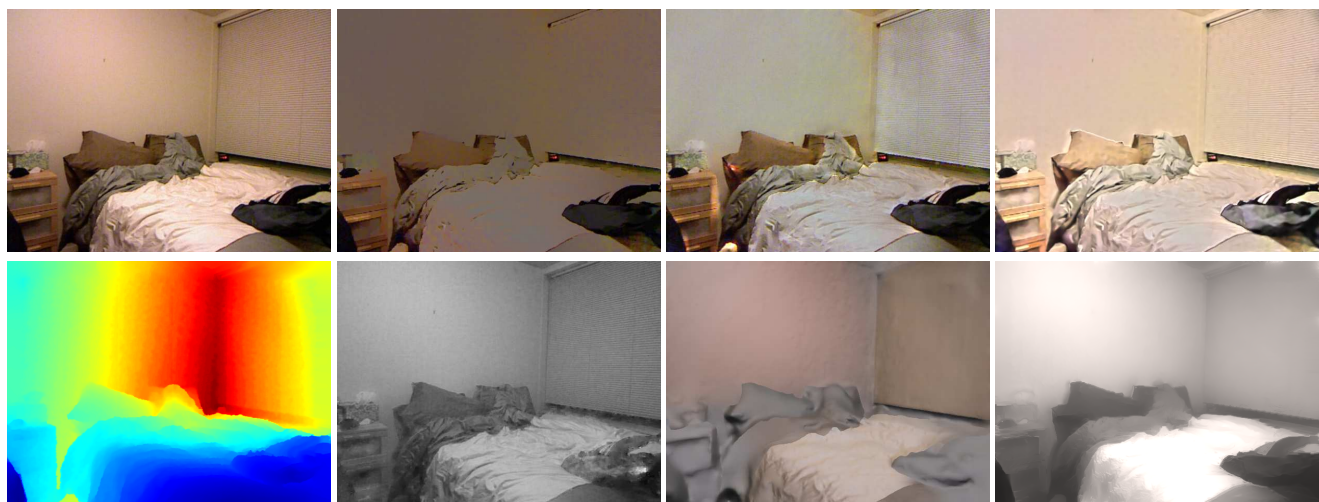


(a) Input

(b) Lee et al.

(c) Barron et al.

(d) Our approach



(a) Input

(b) Lee et al.

(c) Barron et al.

(d) Our approach

